

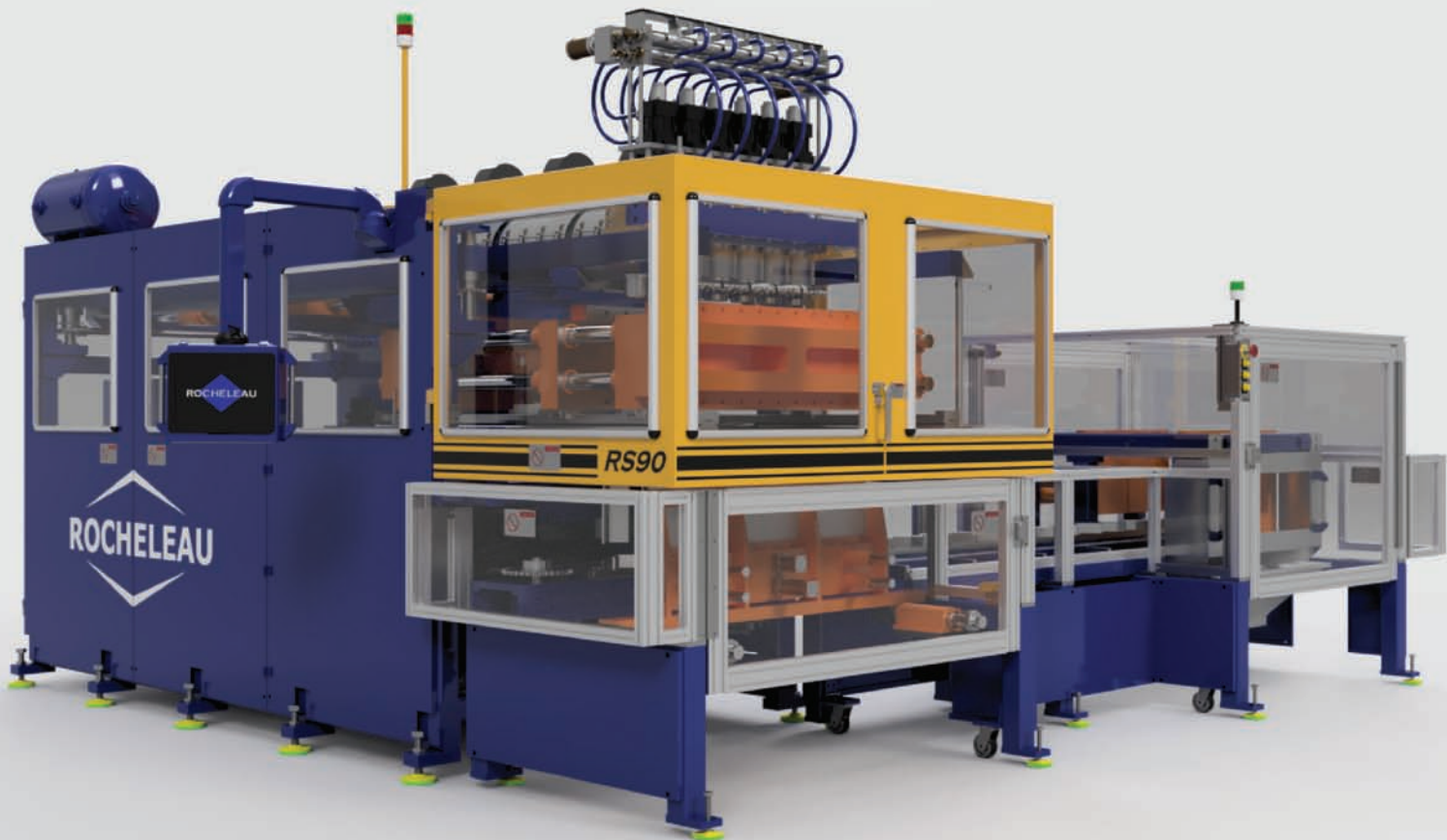
NPE2018
LAUNCH

ROCHELEAU

Est. 1938

RS-90

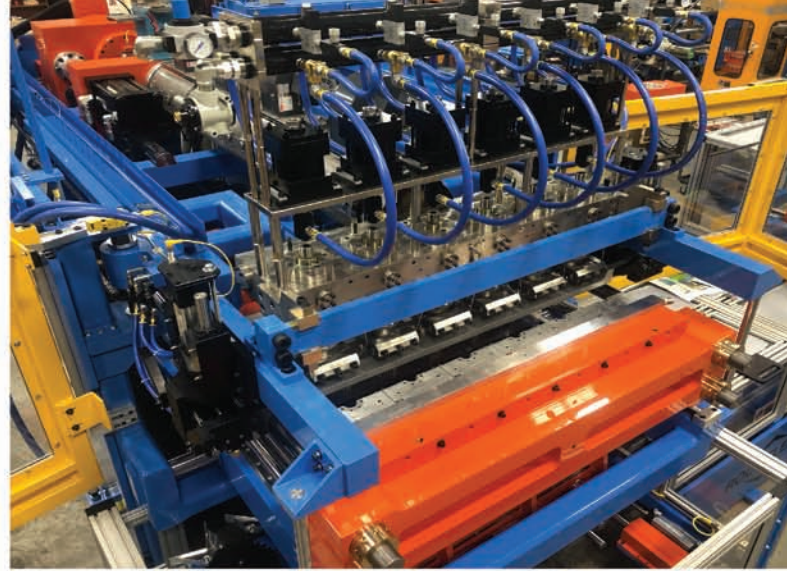
HYBRID TECHNOLOGY RECIPROCATING SCREW EXTRUSION BLOW MOLDER



We're proud to introduce our latest addition to the RS Series of reciprocating screw blow molding machines, capable of up to 6-cavity 1-gallon bottle production.

Systems available for handled bottle production with vertical deflash automation, and non-handled bottles with spin trim automation.

The RS-90 features an energy efficient hybrid extruder drive, 150 HP VFD motor with fixed-displacement gear pump and hydraulic motor. Efficient and powerful.

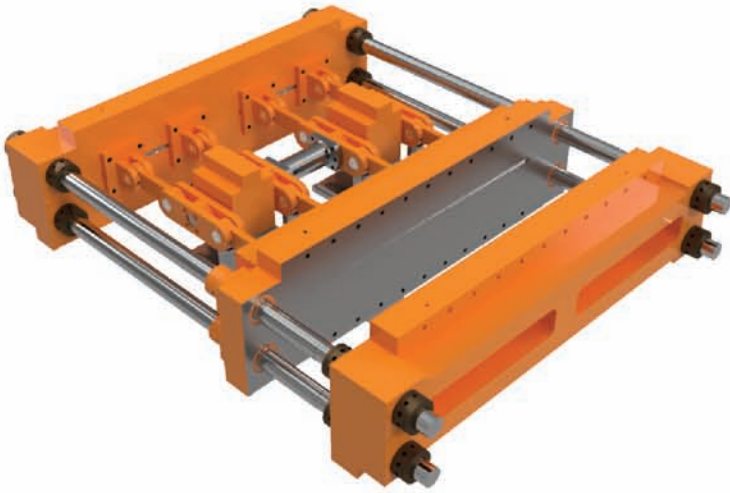


Configurable up to 6-head 1-gallon production



Modular automation and trimming systems available with vertical detabber and spin trimming



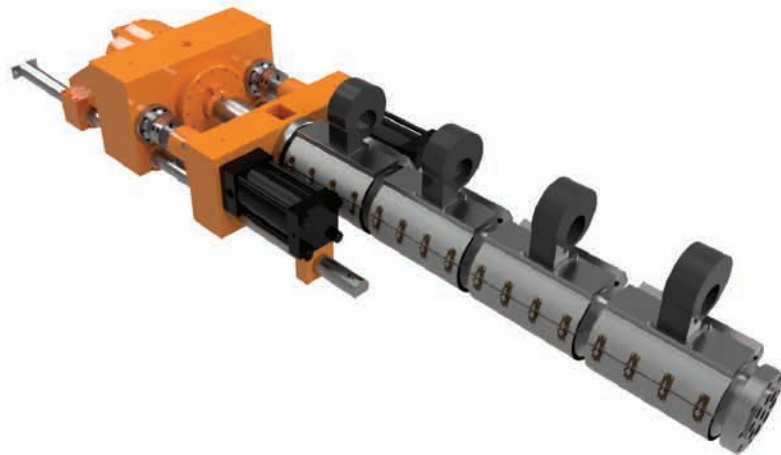


Clamp Unit

- 16" tall x 48" wide usable platen area
- 30" maximum opening
- 9.0" minimum opening
- 15" maximum daylight
- Dual rotary actuator toggle clamp
- 90-ton clamp force
- 4-tiebar assembly plus linear way supports
- Proportional valve speed control
- Nickel-plated 8" thick platens

Extruder Unit

- 90mm (3.54") dia. 27/1 L/D ratio feed screw
- High efficiency barrier flight design
- 750lbs/hr (340kg) processing for HDPE resin
- 130 maximum RPM continuous screw turn
- 1,200 gram maximum shot size
- Cast aluminum extruder heaters
- Four zone barrel temperature control
- 150 HP VFD with hydraulic motor
- Dual 8" bore x 10" stroke injection cylinders



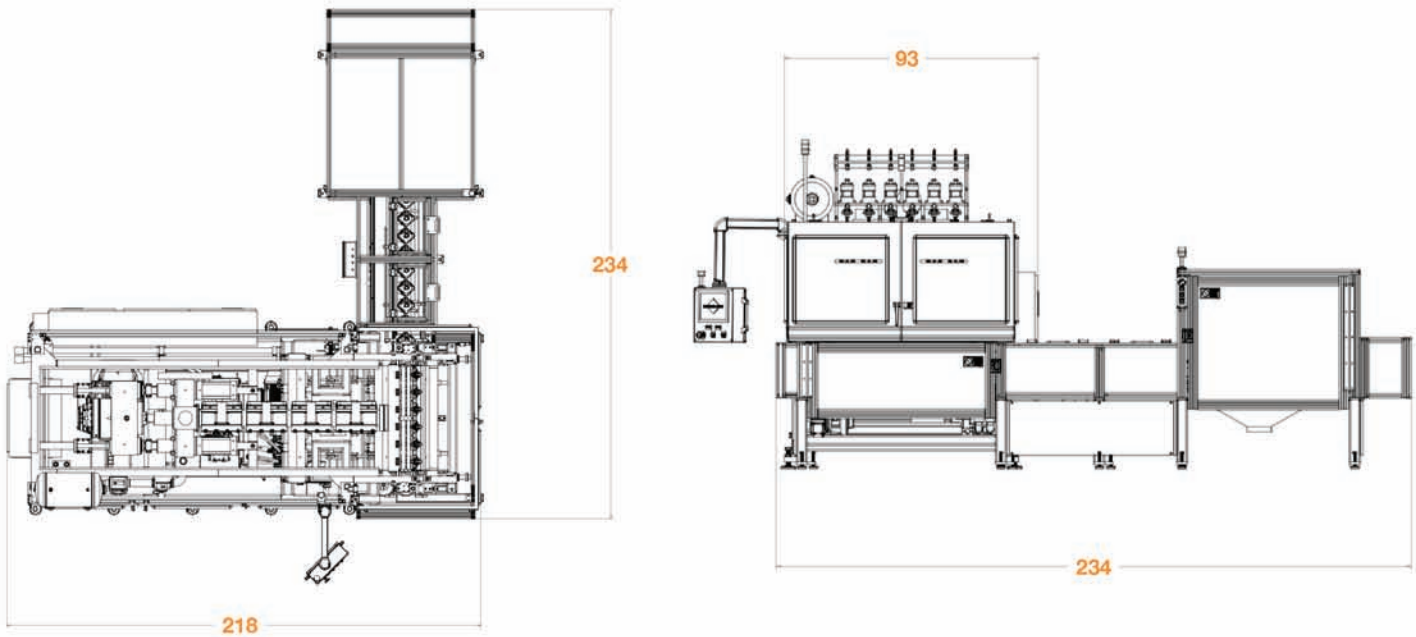
Typical Die Head Layouts

No. of Cavities	Head C.C. Spacing
4	12.0" (304.8mm)
6	8.0" (203.2mm)
8	6.0" (152.4mm)
10	4.75" (120.7mm)
12	4.0" (101.6mm)
14	3.25" (82.6mm)

General / Utility

- 30,000 lbs (13,608 kg) machine weight
- 300 full load amps. 460 volt / 3-phase / 60 Hz
- 75 CFM @ 100 PSI recommended air supply
- 35 ton chiller, 45-F, 60-80 PSI, 80 GPM recommended water supply

Typical layout RS-90 with VT3 takeaway and vertical deflash for handled products



Typical layout RS-90 with HT1 takeaway, detabber and spintrimmer for non-handled products

